

Specifications

Belt Scale Systems

Equipment Warranty	For a period of two (2) years from the date of shipment we guarantee our equipment to be free of defects in materials and workmanship. At ConveyWeigh's discretion we will repair or replace any defective components free of charge including parts and labor at our facility. This does NOT cover lightning damage or overloading the load cells.
Minimum Net Load at Rated Capacity	15% of load cell capacity
Maximum Gross Load at Rated Capacity	80% of load cell capacity
Available Load Cell Sizes	45kg (100lb) 114kg (250lb) 227kg (500lb) 340kg (750lb), 454kg (1,000lb), 907kg (2,000lb)
Minimum Belt Width	254mm (10in) *custom widths available
Maximum Belt Width	2,743mm (108in)

Load Cell

Load Cell Type (Quantity)	Single-Ended Shear Beam (2 each per Weigh Bridge)
Load Cell Output (Rated Output)	3.0mV/V ±0.1%
Excitation	10VDC or VAC
Load Cell Rating	NTEP Approved, Meets OIML and HB44 III Standards
Temperature Range	-40°C to +80°C (-104°F to +176°F) safe; -10°C to +40°C (-50°F to +104°F) compensated
Overload	150% of rated capacity
Input Impedance	385 ohms ±10
Output Impedance	350 ohms ±4
Environmental Protection	Hermetically-sealed; IP6
Load Cell Construction	Stainless Steel
Cable	6 Conductor, Shielded, 22 AWG

Positive Contact Speed Sensor

Type	Digital, Proximity Type
Mounting	Bolts to Weigh Bridge
Construction	Laser Cut, Heavy Steel Arm, Polyurethane Coated Steel Wheel, Greasable Bearings
Mounting Hardware	Supplied with Bronze Bushing Pivot, Stainless Steel Pivot Pin
Shipping Weight	12.70 kg (28 lb)

Belt-Pro Electronic Integrator - Field Mount Enclosure

Size	203 mm (8 in) high x 152 mm (6 in) wide x 89mm (3.5 in) deep
Material	Galvanized Steel
Shipping Weight	3 kg (6 lb)
Protection	IP 65, NEMA 4X

Belt-Pro Electronic Integrator - Environmental Specifications

Operating Temperature	-10°C to +65°C (+14°F to +140°F)
Storage Temperature	-30°C to +80°C (-22°F to +176°F)
Humidity	20 - 70% non-condensing

Belt-Pro Electronic Integrator - Power Requirements

Voltage	100 - 240 VAC at 50-60 Hz; 10W
Wire	14AWG recommended for power connection
Protection	Internal fuse, 1A TR5

Belt-Pro Electronic Integrator - Inputs and Outputs

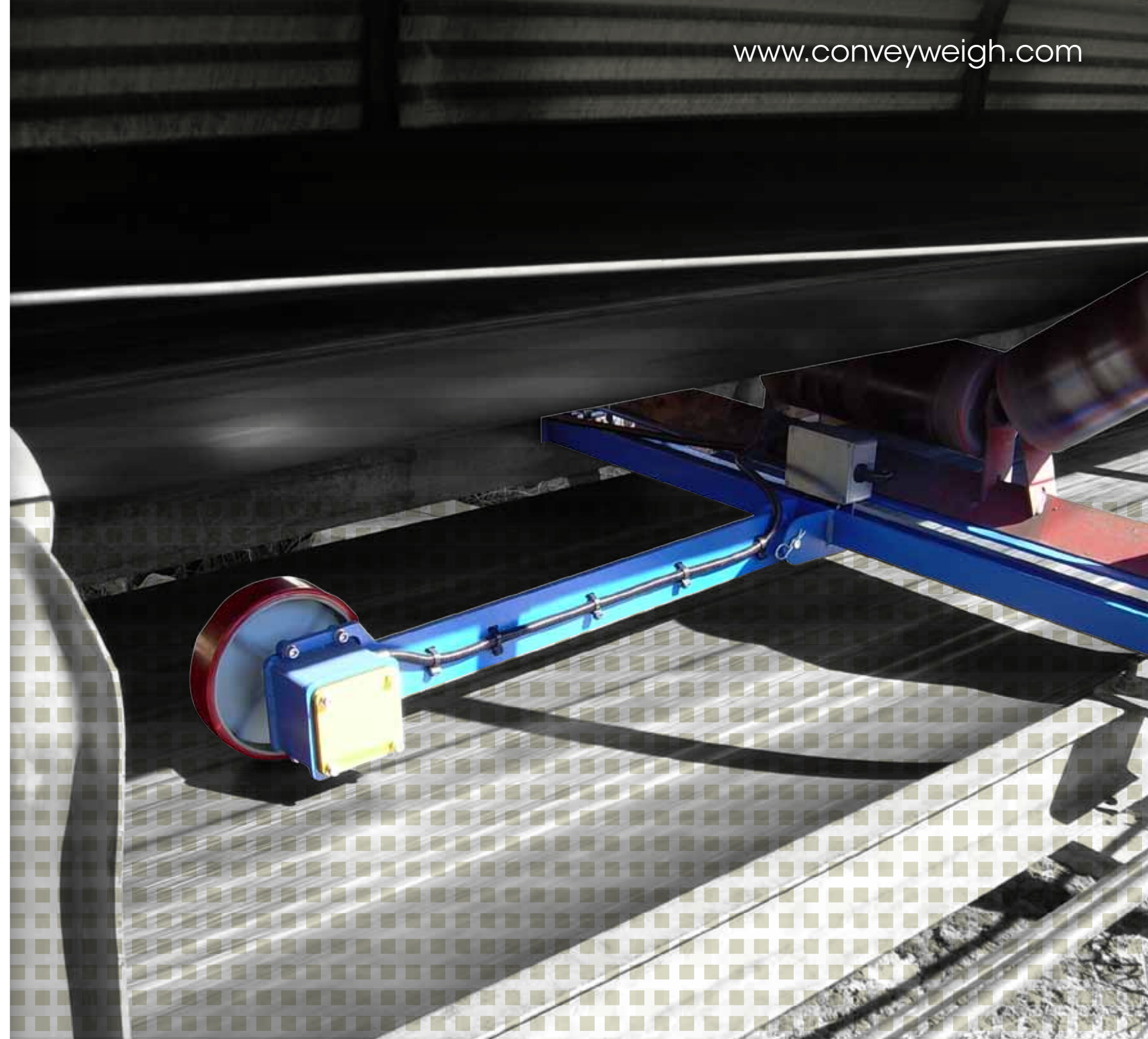
Analog Inputs	Mv signal from load cell
Analog Outputs (Requires Optional Card)	Quantity: 1 Type: 4-20mA, 0 - 10V Maximum Load 500 ohm Resolution: 12 bit; 4,096 divisions Linearity 0.1% Insulation: Galvanic; 1,500 Vrms
Remote Tons Counter	Quantity: 1 Type: Relay; Dry Contact; N.O. Insulation: Galvanic; 10,000 M-ohm Max Voltage: 125VAC or 110 VDC Max Current: 0.6A
Communication Ports	RS232: 1 each, Full Duplex RS485: 1 each, Half Duplex



ConveyWeigh, LLC.
522 King Street, Dunbar, WV 25064
Phone: 304-201-2354 Fax: 304-755-3883
www.conveyweigh.com sales@conveyweigh.com

© 2011 ConveyWeigh, LLC.
All rights reserved. Specifications, terms and pricing are subject to change.
Literature Code CW-AWA-1102

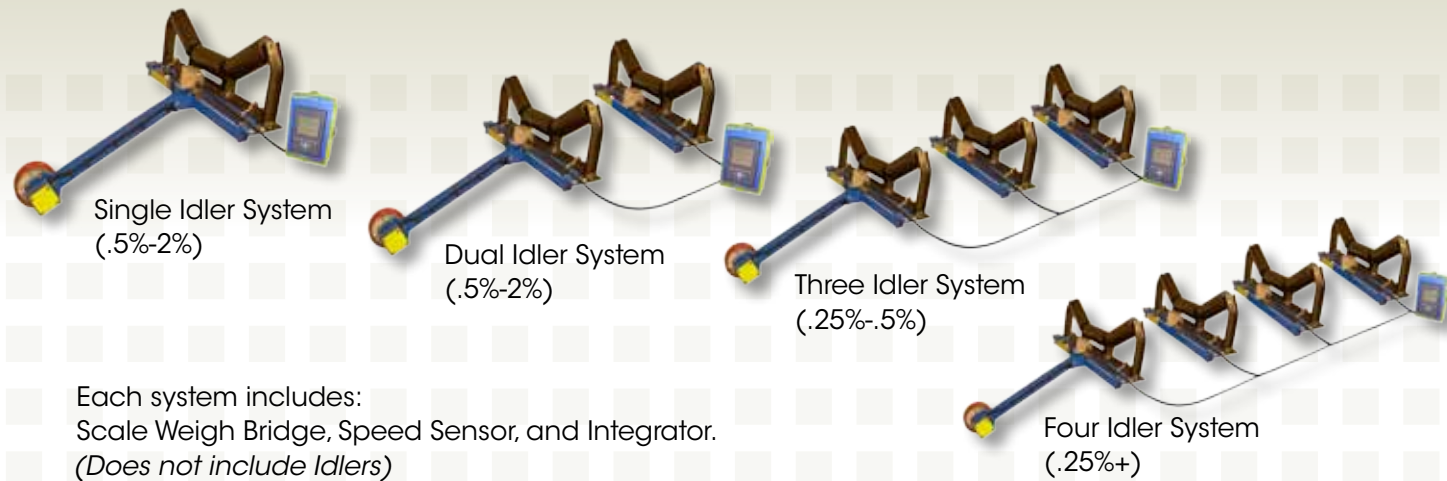
Distributed by:



Accurate. Advanced. Affordable.

CONVEYOR BELT SCALES

Modular Conveyor Belt Scale Systems

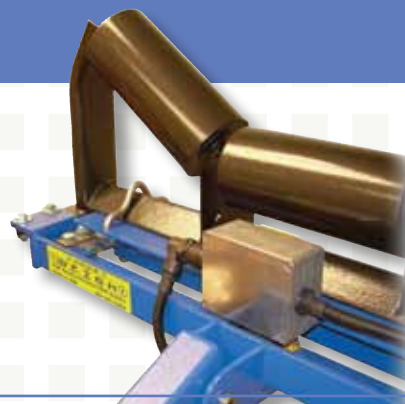


Each system includes:
Scale Weigh Bridge, Speed Sensor, and Integrator.
(Does not include Idlers)

Weigh Bridge Features

Modular System, 1 - 4 Idlers
Heavy Steel Construction
Urethane Powder Coated Standard
Rigid, Low Profile
NEMA 4X Junction Box
Test Weigh Hanger
High Torsional Integrity

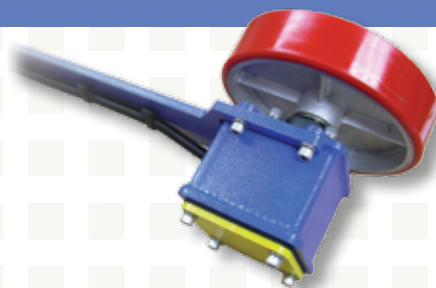
Quality NTEP Loadcells
Universal Idler Mounting
All Wiring in Flexible Conduit
Fully Assembled, Ready to Install



Speed Sensor Features

Integrated into the Weigh Bridge
Runs on the Return Belt
Heavy Steel Arm
Bronze Bushing Pivot
Stainless Steel Pivot Pin
All Wiring in Flexible Conduit

Smooth Running, No Bounce
Polyurethane Coated Steel Wheel
Greaseable Bearings
Non-Contact Speed Encoder
Water-Tight Design



BeltPro Integrator

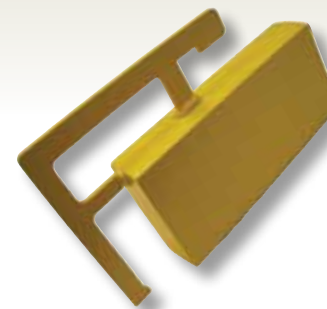
Microprocessor Based
Backlighted Display
1/4 VGA 320 x 240 Display
English or Metric Units
-10°C to +65°C Operation
Optional Ethernet Network
Auto Zero Tracking
90VAC to 240VAC Site Power
12VDC or 24VDC Direct Power

Menu Driven, Easy Operation
Push Button Calibration
RS232, 422, 485 Serial Output
Printer Output
Fixed Speed Input Setting
Up to 8 Load Cell Inputs
Galvanized NEMA 4X Enclosure
Batch Control Relay
Remote Totalizer Output



Options

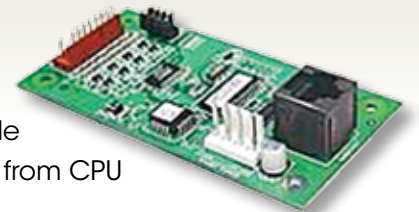
Calibration Test Weights



- 10.4 kg (23 lb) Avg WT
- Fabricated Steel
- Urethane Powder Coated
- Precision Weighed
- Stamped with Weight
- Quantity Based on Application

Analog Output Card

- 4-20 Ma, 0 - 10V
- 12 Bit Resolution
- Software Scalable
- Optically Isolated from CPU



Remote Display



Remote Totalizer with Rate Meter. Wired or Wireless Connection Available. For other options and configurations please consult ConveyWeigh for a quote.

Wireless Radio Modem

FCC - Industry Canada Approved
1 watt, 915 MHz spread spectrum integrated antenna, (3000 ft) Range. Long range antenna option (2 miles).



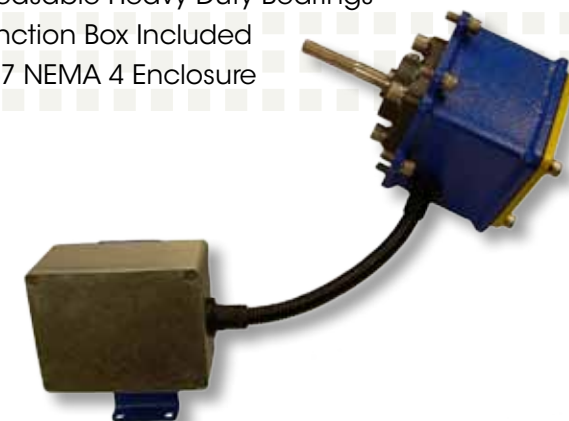
Angle Compensation Module



- Solid State - Rugged Design
- High Accuracy
- IP65 NEMA 4X Enclosure
- Easy Bolt on Installation
- Self Calibrating

Shaft Mount Speed Sensor

- Threaded (1/2") Shaft for Easy Coupling
- Greasable Heavy Duty Bearings
- Junction Box Included
- IP67 NEMA 4 Enclosure



Crating and Shipping

All scales are crated and shipped FOB Convey Weigh Factory, Dunbar WV USA

